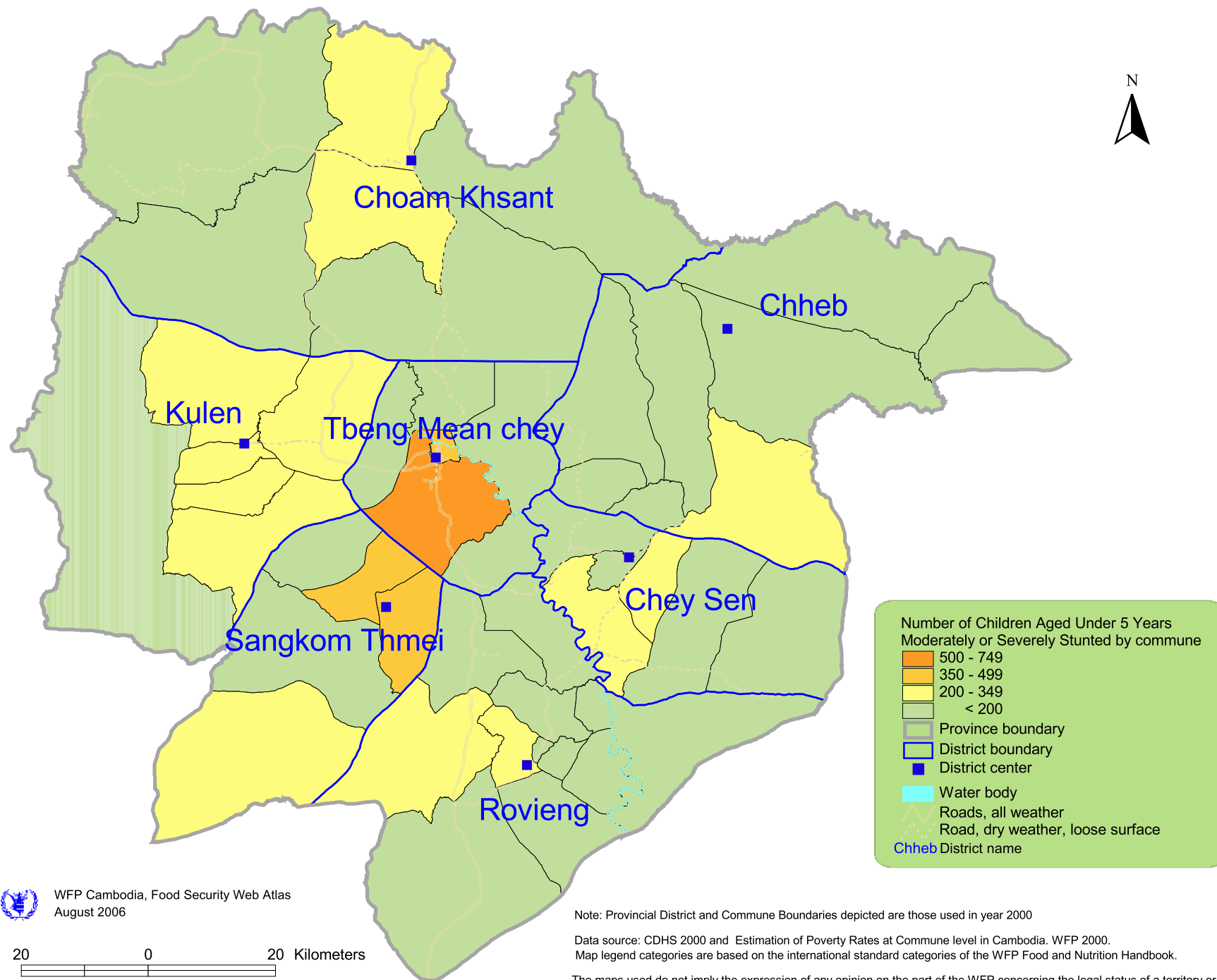


Children aged <5 years Stunted: Number of Children by Commune in Preah Vihear Province year 2000.  
(Map PVR 06.00)



WFP Cambodia, Food Security Web Atlas  
August 2006

20 0 20 Kilometers

Note: Provincial District and Commune Boundaries depicted are those used in year 2000

Data source: CDHS 2000 and Estimation of Poverty Rates at Commune level in Cambodia. WFP 2000.  
Map legend categories are based on the international standard categories of the WFP Food and Nutrition Handbook.

The maps used do not imply the expression of any opinion on the part of the WFP concerning the legal status of a territory or of its authorities.