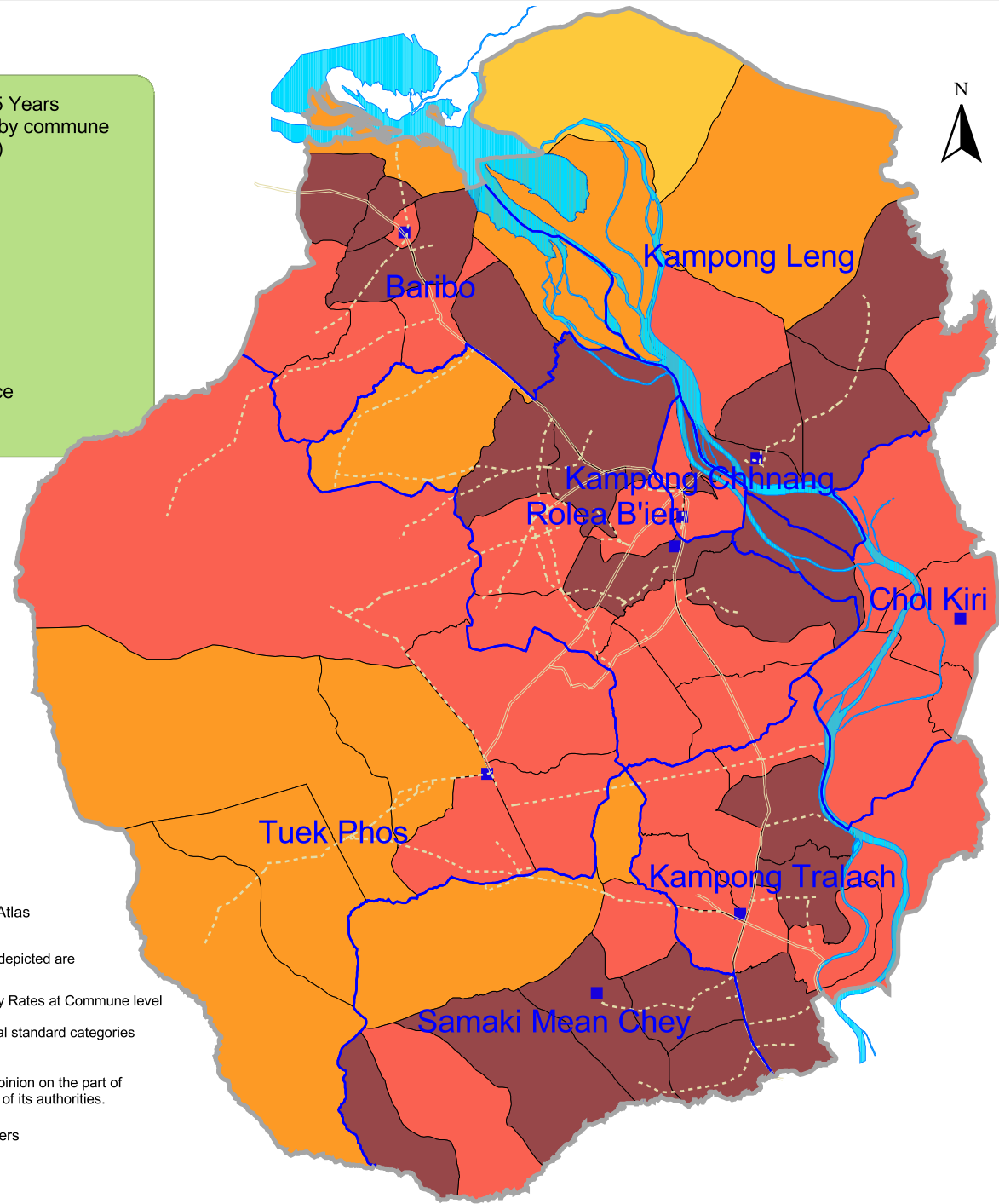


Children aged <5 years Underweight: Percent by Commune in Kampong Chhnang province year 2000.  
(Map KCG 07.00)

Percentage of Children Aged Under 5 Years Moderately or Severely Underweight by commune

- >= 50 Extremely high (>=50%)
- 40 - 49 Extremely high
- 30 - 39
- 20 - 29
- 10 - 19 (No commune)
- Province boundary
- District boundary
- District center
- Water body
- Roads, all weather
- Road, dry weather, loose surface
- Baribo District name



WFP Cambodia, Food Security Web Atlas  
July 2006

Note: Provincial District and Commune Boundaries depicted are those used in year 2000

Data source: CDHS 2000 and Estimation of Poverty Rates at Commune level in Cambodia, WFP 2000.

Map legend categories are based on the international standard categories of the WFP Food and Nutrition Handbook.

The maps used do not imply the expression of any opinion on the part of the WFP concerning the legal status of a territory or of its authorities.

