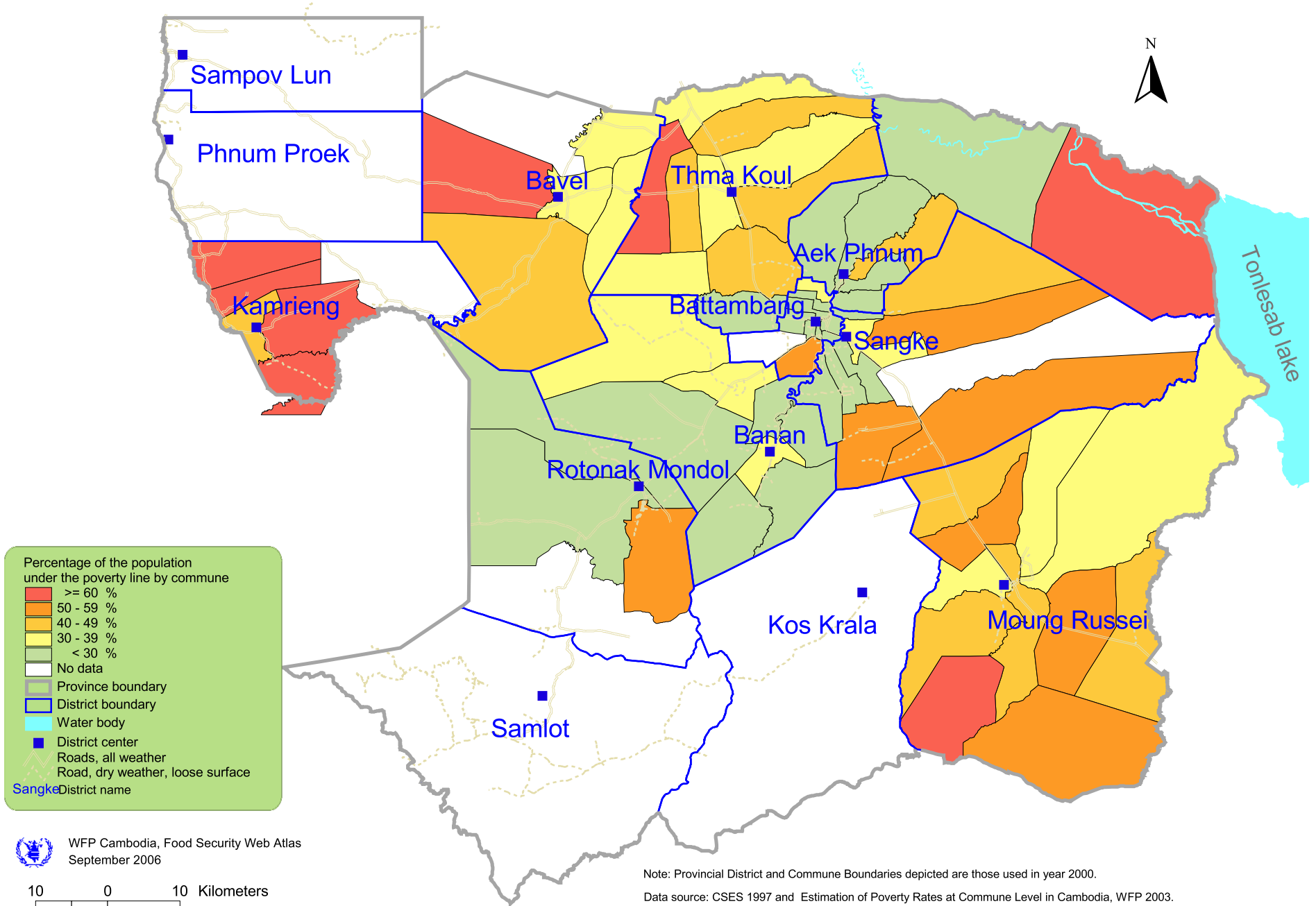


Consumption Poverty: Percentage of the population under the Poverty Line by commune in Battambang province year 1997. (Map BTB 03.01.00).



Note: Provincial District and Commune Boundaries depicted are those used in year 2000.

Data source: CSES 1997 and Estimation of Poverty Rates at Commune Level in Cambodia, WFP 2003.

The maps used do not imply the expression of any opinion on the part of the WFP concerning the legal status of a territory or of its authorities.